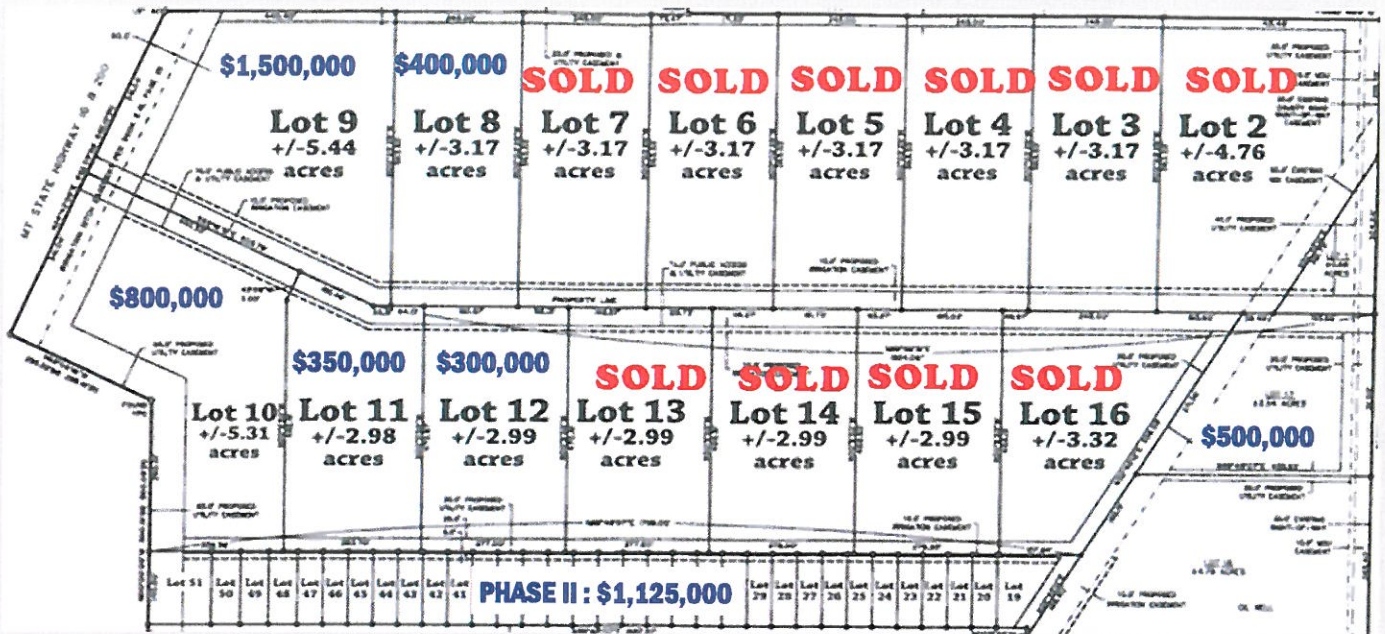


# Byer Industrial Park



**AVAILABLE LOTS** in the newly created BYER INDUSTRIAL PARK on S. Central Ave. Lots range in size from 2.54 to 5.44 acres and can be combined for larger footprint requirements. Lots with Highway exposure are still available as are lots on County Road 350. This is a well established area for many types of commercial and industrial applications. Ask an agent about locating your business here.



120 2nd Ave SW • Sidney, MT  
Office: 406.482.4480

## Developers

**Don Byer**  
**Roger Byer**